

Finally! Your Affordable Home

The Cara. 1743 Total Sq. Ft. 1184 Living

\$109,900 on your lot!*

3 Bedrooms 2 Baths 2 Car Garage

*Perfect for the new family!
Perfect for retirement living!
Perfect Vacation Home!
Affordability with luxury!
9 foot Volume Ceilings!*



Tile floors in the Foyer, Kitchen, Pantry, and Baths!
Upgraded Cabinets!
Berber Carpet with upgraded pad!
Sound Insulated Interior Walls!
Automatic Garage Door Opener!

Huge walk in Pantry!
Solid Surface Countertops Kitchen and Baths!
His & Her walk in Closets!
GE Range, Dishwasher, Microwave!
Concrete Block Construction!

"Your local on your lot builder"

BJH Construction General Contractors, Inc Ridge Manor, FL

Serving Hernando, East Pasco, Citrus, & Sumter Counties

352-398-5129

#CGC1506503

*Does not include impact/ connection fees

We also do Remodels, Additions, Detached Garages

2006-2007-2008-2009 Hernando Builders Association remodeler of the year

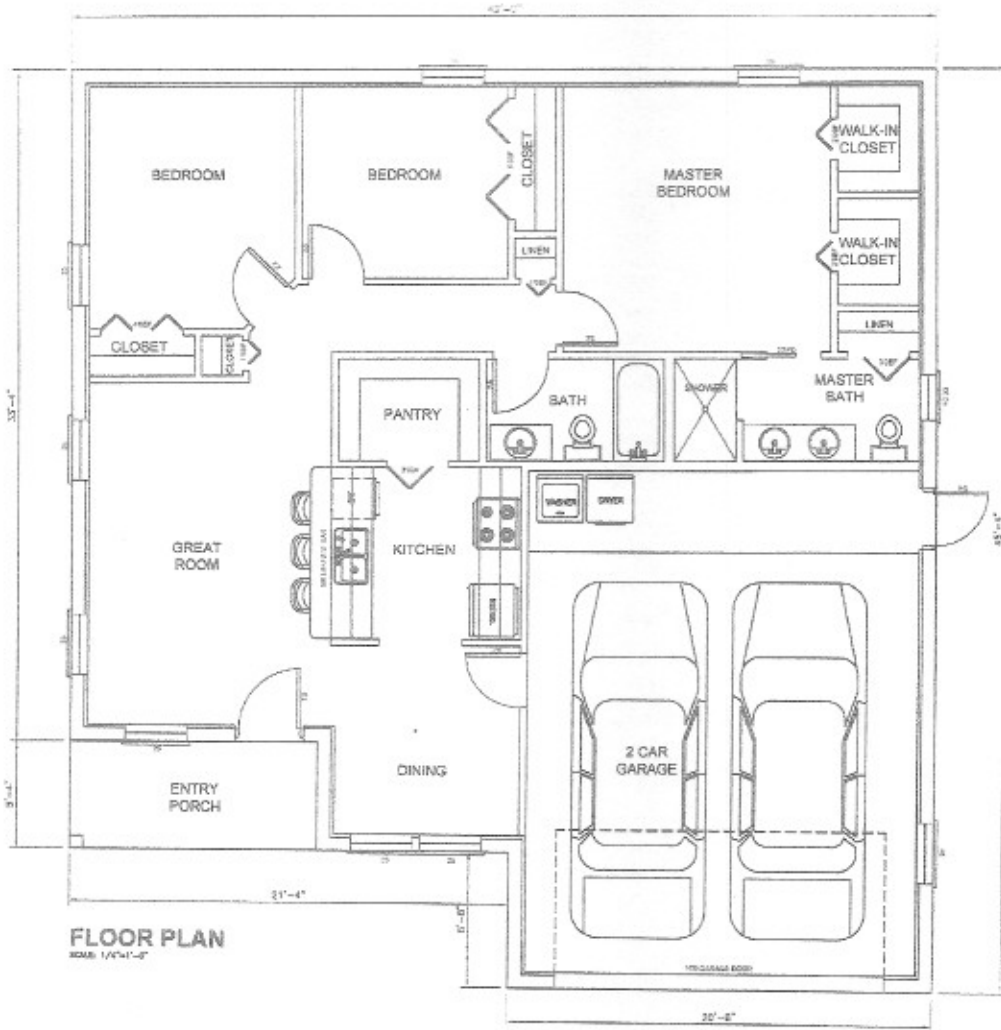
2008-2009 Hernando Builders Association Builder of the Year

Member

Hernando Builders Association, Florida Home Builders Association, National Association of Home Builders
Greater Hernando County Chamber of Commerce, Dade City Chamber of Commerce

Financing available for qualified buyers

The CARA \$109,900 on your lot*
***Price does not include impact/connection fees**



FLOOR PLAN
SCALE: 1/8"=1'-0"

| | | |
|--------------|-------------|---------------|
| LIVING AREA | 1184 | SQ.FT. |
| GARAGE | 515 | SQ.FT. |
| ENTRY PORCH | 64 | SQ.FT. |
| TOTAL | 1743 | SQ.FT. |



FRONT ELEVATION
SCALE: 1/8"=1'-0"